

SPECIFICATIONS

		C-Finisher	C-Finisher with Booklet Maker
Tray Type	Exit Tray	Sorting (Offset available)/Stacking (Offset available)	
	Finisher Tray	Sorting (Offset available)/Stacking (Offset available)	
	Booklet Tray	Not available	Sorting/Stacking
Paper Size/ Paper Weight	Exit Tray	Max.: 12 x 18" (304.8 x 457.2mm), Min.: Postcards: 52 to 280g/m ²	
	Finisher Tray	Max.: 12 x 18" (304.8 x 457.2mm), Min.: B5, 52 to 200g/m ²	
	Booklet Tray	Not available	Max.: A3, 12 x 18" (304.8 x 457.2mm), Min.: A4, 8.5 x 11" (216 x 279mm), 60 to 105g/m ²
Tray Capacity*1	Exit Tray	A4 500 Sheets	
	Finisher Tray	[Without staples] A4: 3,000 sheets Paper of B4 or larger: 1,500 sheets Mixed Size Stacking*2: 300 sheets [With staples] A4: 200 sets or 3,000 sheets B4 or larger: 100 sets or 1,500 sheets Mixed Size Stacking*2: 70 sets or 200 sheets	[Without staples] A4: 1,500 sheets Paper of B4 or larger: 1,500 sheets Mixed Size Stacking*2: 300 sheets [With staples] A4: 200 sets or 1,500 sheets B4 or larger: 100 sets or 1,500 sheets Mixed Size Stacking*2: 70 sets or 200 sheets
	Booklet Tray	Not available	20 sets
Stapling	Capacity	50 sheets (Max. 90g/m ²)	
	Paper Size	Max.: A3, 279 x 432mm (11 x 17"), Min.: B5	
	Positions	Single (Front and Rear Angled Staple), Dual (parallel)	
Punching	Paper Size	Max.: A3, 279 x 432mm (11 x 17"), Min.: B5	
	No. of Punch Holes	2/4 holes (Option: US2/3 holes)	
Saddle-stitch and Centre-binding	Maximum Capacity	Not available	Saddle-stitch: 15 sheets (90g/m ² or less)*3, Centre-binding: 5 sheets
	Paper Size	Not available	Max.: A3, 11 x 17" (279 x 432mm), Min.: A4, 8.5 x 11" (216 x 279mm)
	Paper Weight	Not available	Saddle-stitch: 60 to 90 g/m ² , Centre-binding: 60 to 105 g/m ²
Dimensions/Weight	W 693 x D 644 x H 1,004 mm, 50 kg	W 844 x D 644 x H 1,004 mm, 81kg	
Space requirement when connected to main body*4	W1,874.0 x D779.0mm (Machine + Finisher C) W1,936.0 x 779.0mm (Machine + C-Finisher with Booklet Maker)		

		Staple Finisher D2	Booklet Finisher D2
Tray Type	Exit Tray	Sorting/Stacking	
	Finisher Tray	Sorting (Offset available)/Stacking (Offset available)	
	Booklet Tray	Not available	Sorting/Stacking
Paper Size/ Paper Weight	Exit Tray	Max.: 12 x 18" (304.8 x 457.2mm), Min.: Postcards, 52 to 280g/m ²	
	Finisher Tray	Max.: 12 x 18" (304.8 x 457.2mm), Min.: B5, 52 to 200g/m ²	
	Booklet Tray *1	Not available	Max.: 304.8 x 432mm (12 x 18"), Min.: A4: 216 x 279mm (8.5 x 11"), 60 to 105g/m ²
Tray Capacity*2	Exit Tray	A4 500 sheets	
	Finisher Tray	[Without staples] A4: 3,000 sheets, B4 or larger: 1,500 sheets Mixed Size Stacking*3: 300 sheets [With staples] A4: 200 sets or 3,000 sheets, Min. B4: 100 sets or 1,500 sheets	[Without staples] A4: 2,000 sheets, B4 or larger: 1,500 sheets, Mixed Size Stacking*3: 300 sheets [With staples] A4: 200 sets or 2,000 sheets, Min. B4: 100 sets or 1,500 sheets
	Booklet Tray	Not available	20 Sets*4
Stapling	Capacity	100 Sheets*5 (52 to 80g/m ²)	
	Paper Size	Max.: A3, 279 x 432mm (11 x 17"), Min.: B5	
	Positions	Single (Front/Angled, Centre/Parallel, Back/Parallel, Angled)*6, Dual (Parallel)	
Punching	Paper Size	Max.: A3*7, 279 x 432mm (11 x 17"), Min.: B5	
	No. of Punch Holes	2 Holes; 4 Holes (Option: US2/3 holes)	
	Paper Weight	52 to 200g/m ²	
Saddle-stitch, and Centre-binding	Maximum Capacity	Not available	Saddle-stitch: 15 sheets*8, Centre-binding: 5 sheets
	Paper Size	Not available	Max.: A3, 304.8 x 457.2mm (12 x 18"), Min.: A4, 216 x 279mm (8.5 x 11")
	Paper Weight	Not available	Saddle-stitch: 60 to 90g/m ² , Centre-binding: 60 to 105g/m ²
Paper Fold*9	Z Fold	Paper size: A3S, 11 x 17" S, B4S, KAI, Paper type: 60 to 90g/m ²	
	Tri-fold	Paper size: A4S, Letter (8.5 x 11") S, Paper type: 60 to 90g/m ²	
Interposer*10	Paper Size	Max.: A3, 279 x 432mm (11 x 17"), Min.: B5LEF	
	Tray Capacity*2	200 sheets	
	Paper Weight	60 to 220g/m ²	
Dimensions	W 1,045 x D 725 x H 1,165mm	W 1,050 x D 725 x H 1,165mm	
Weight	105kg	130kg	
Space Requirement when Connected to Main Body*11	W2,337 x D779.0mm (Machine + Finisher D2)	W 2,342 x D 779mm (Machine + Booklet Finisher D2)	

*1 Cover sheets can be up to 220 g/m². When using 91 to 220g/m² weight cover sheets, 64 to 80g/m² paper can be used for the text of the document.
*2 When using 80gsm paper.
*3 When sheets larger than the minimum size are stacked.
*4 There are cases when paper cannot be stored because of the paper type or its use conditions.
*5 When size exceeds A4 or 8.5 x 11", the capacity is 65 sheets. When paper is more than 80g/m², the maximum number of stapled sheets is 100.
*6 A4LEF, A3 only.
*7 Size where 4-hole punches are possible.
*8 When cover is applied, the maximum is 14 sheets. Also, the maximum number of saddle-stitch sheets can be changed to 25 sheets by a customer engineer.
*9 The paper folding features requires the optional D2 Folder Unit.
*10 Paper set at the interposer cannot be printed.
*11 When the Main Body + Staple Finisher or Booklet Finisher D2 + D2 Folder Unit, extension trays are extended, and by-pass tray is extended.



Achieve **high performance** results
with **intelligent & professional**
document processing every time



DocuCentre-II 7000/6000

Digital Multifunction Device

The Fuji Xerox DocuCentre-II 7000/6000 is your document gateway to the business world. It is fast, efficient and easy-to-operate, with reliable results of top-notch quality that Fuji Xerox is known for.

The best business partner you'll ever have

High productivity Fast printing and quality copying at up to 75ppm

Efficient High speed scanning of 75 images per minute for mono documents

Compatible Diverse fax functions such as PC Fax, i-Fax and server Fax are available

More choices Choose from up to eight different combinations of finishing features

Easy-to-use New enhanced features include a 10.4 inch full-size colour UI panel and high capacity paper feeder

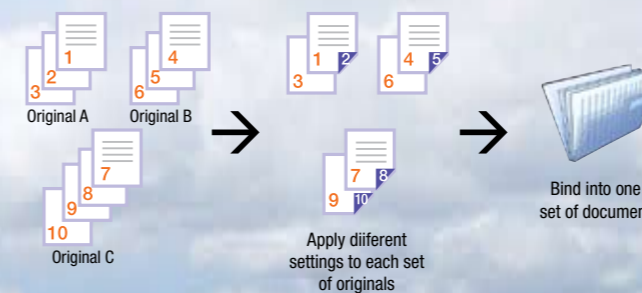
Clear copies that meet all demands

DocuCentre-II
7000/6000
Digital Multifunction Device

Get clear copies in an instant with a First Copy Out Time (FCOT) of just 3 seconds.

Copy-ready in 30 seconds Go from sleep or low-power mode to stand-by mode almost instantaneously. New technology has resulted in a quick warm-up time – the Fuji Xerox DocuCentre-II 7000/6000 is ready for copy action in 30 seconds.

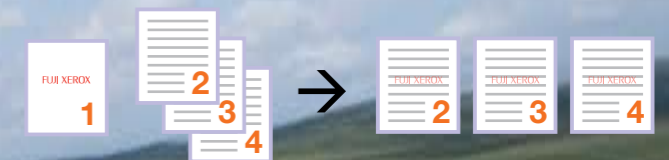
Copy and merge Eliminate manual copying and document collation. With the innovative Build Job function, you can divide a copy job into different segments and apply specific settings to each before merging them into a single seamless copy job.



Copy intelligently Besides customised annotation features like page numbers, dates and stamps, use the intelligent Bates Stamping function to copy and number your documents more effectively.

Bates Stamping allows you to choose specific pages from documents of different types (e.g. appendixes and drafts), put them together and then number them accordingly as a new document. This function is ideal when you need to copy and edit different sections of books or manuals, or when you want to add old paper documents into a new report.

Copy with overlay Previously, company logos or other images could only be input as a form overlay during printing. Not anymore! The Fuji Xerox DocuCentre-II 7000/6000 lets you create form overlaid documents for enhanced security during the copying process.

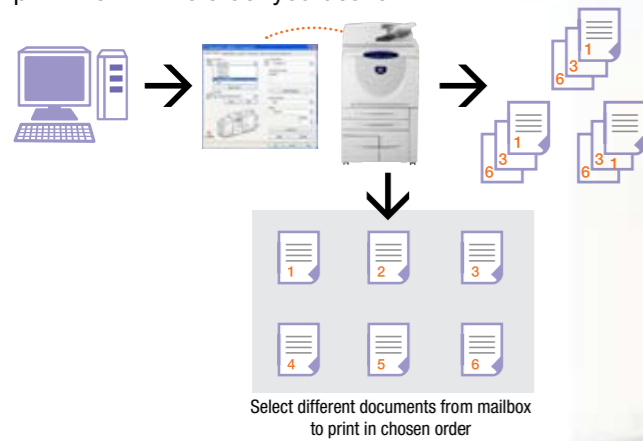


Perfect printing any way you need it

The Fuji Xerox DocuCentre-II 7000/6000 fits in seamlessly with different systems and technologies, giving you more control in the way you print.

Print directly without drivers Printing DocuWorks, PDF and TIFF files is simple. Just drag and drop the file you want to the ContentsBridge Utility, or use the Job Submission function of the CentreWare Internet Service, and let the Fuji Xerox DocuCentre-II 7000/6000 do the rest! Forget the drivers and complete your printing in seconds.

Print multiple documents the way you want to Save your documents into the mailbox of the Fuji Xerox DocuCentre-II 7000/6000 using the printer driver installed on the PC. Now, you have total control over what you want printed in the manner needed! Select different multi-page documents from the mailbox and print them in the order you desire.



Print without worries about compatibility

Your Fuji Xerox DocuCentre multifunction device works seamlessly in Citrix MetaFrame® network environments. Expect a smooth and hassle-free rollout even when operating in a network of printers.

And enhance your Citrix printing choices by using Fuji Xerox Print Utility for MetaFrame®. This printing interface boasts these functions:

- Full range of features in the Auto Created Client Printers (ACCP)
- User print settings remain the same when running applications on the LAN or through the ACCP

- High speed data communication through Independent Computing Architecture (ICA) protocol
- No adverse effect on the MetaFrame® login
- Quick and easy installation

Enhanced PS driver Employ the PC fax function and the finisher functions when you use the PS driver.

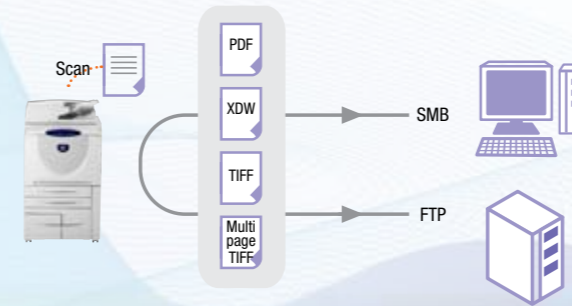
Support for Intel Macs Fuji Xerox DocuCentre-II 7000/6000 supports MAC OSx10.4.4-10.4.5 that supports Intel CPU machines.

Efficient scans that drive your operations

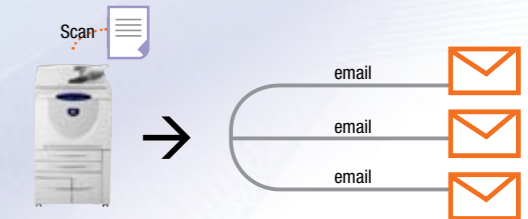
Multi-tasking is made simple with the Fuji Xerox DocuCentre-II 7000/6000.

DocuCentre-II
7000/6000
Digital Multifunction Device

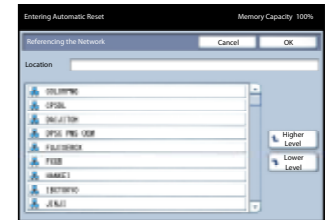
Scan into different formats Scan your documents into formats such as TIFF, multi-page TIFF, PDF or XDW, and then store them onto a PC or server for Server Message Block (SMB) or File Transfer Protocol (FTP) applications.



Scan and send to multiple e-mail addresses When different people need to see the same document, you can instantly send your scanned document to multiple e-mail recipients.



Scan to set up path to Server Message Block (SMB) or network browsing Tedious and time-consuming manual key-in is now a thing of the past. The Fuji Xerox DocuCentre-II 7000/6000 intelligently displays hierarchical structure information such as server names, PC and folder names, allowing you to set up the path of scan to SMB or network browsing.



Scan without pause Don't sacrifice productivity; scanning large volumes of documents can continue, even if you need to change the setting parameters mid-way.



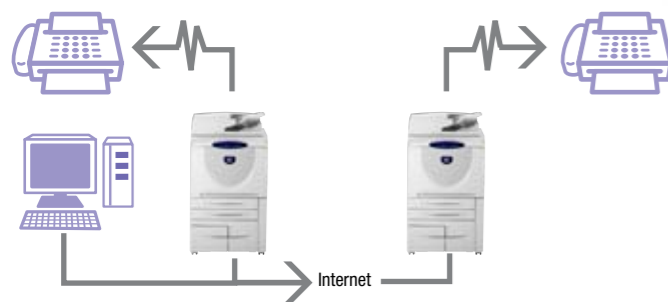
Accomplish top productivity

Improve your work efficiency and boost your productivity with these unique features.

Fax directly from PC Save time and costs and help the environment. You no longer need to print out hardcopy documents to be faxed; instead fax directly from your PC.

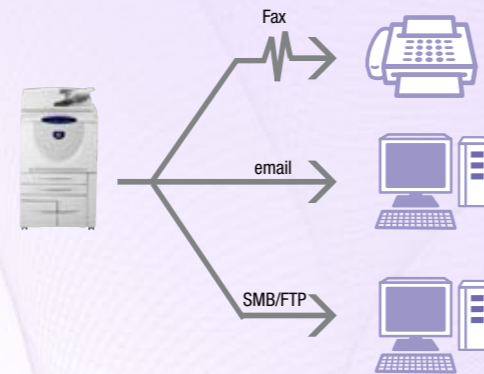


Fax by email Use the Internet Fax function to send faxed documents as email attachments through the Internet or the Intranet.



Note: Email environment and Internet fax kit are required

Fax while you work Improve your work efficiency. With the Job Flow function, documents can be faxed, sent as email attachments and saved onto the SMB or FTP server, all at the same time.



Easy fax management Store your received faxed documents as DocuWorks or PDF files in a designated PC or server. In addition, use the ApeosWare Flow Service for image processing and format conversion to automatically organise your documents according to time band or by sender ID.



Easy-to-use features at your fingertips

The Fuji Xerox DocuCentre-II 7000/6000 has been designed with the user in mind, with special features to help you work better.

DocuCentre-II 7000/6000
Digital Multifunction Device



Larger touch panel screen

The DocuCentre-II 7000/6000 comes with a standard 8.1 inch half black UI panel. Upgrade to a full-sized 10.4 inch colour UI panel for easier usage and a clearer view of the different functions.

Motion picture pin-points paper jam Solve paper jams quickly and easily. A clear motion picture shows you the exact position of the jam and provides you easy-to-follow instructions on how to rectify the situation.



Achieve first-rate finishes every time

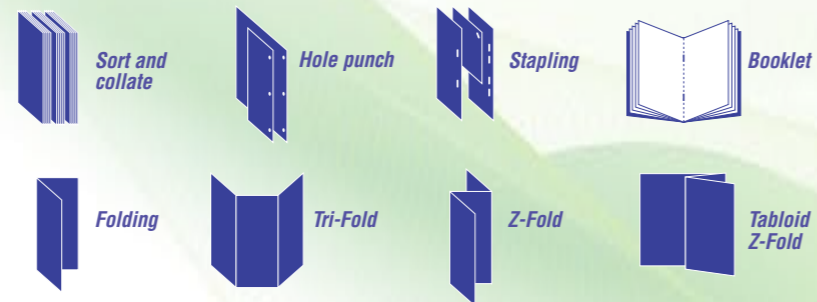
Leave the paper folding, hole punching and stapling of documents to an expert!

The choice is yours

Choose from eight different types of finishers, and two high capacity feeders, to meet your every document requirement.

**DocuCentre-II
7000/6000**
Digital Multifunction Device

With a staple capacity of 100 sheets, the Fuji Xerox DocuCentre-II 7000/6000 also lets you choose from the Bi-fold, Z-fold, C Tri-fold or the Z Tri-fold.



In addition, the Fuji Xerox DocuCentre-II 7000/6000 is the perfect help to create the best finish for all your documents:

- The innovative auto staple cutting mechanism cuts staples according to the number of sheets to be put together
- The machine detects and corrects curled paper
- Coloured printed paper, heavyweight paper or tab stock can be inserted into the main document, without passing through the high temperature fuser



C Finisher



C Finisher with Booklet Maker



Staple Finisher D2



Booklet Finisher D2



Staple Finisher D2 with D2 Folder Unit



Booklet Finisher D2 with D2 Folder unit



DocuCentre-II 7000/6000

Digital Multifunction Device

SPECIFICATIONS

CONFIGURATIONS		DocuCentre-II 7000/6000
COPY		
Type	Console type	
Scanning resolution	600 x 600dpi	
Writing resolution	Equivalent to 2,400 x 600dpi	
Warm-up time	30 sec (at room temperature 20°C)	
Copy original	Max.: 297 x 432mm (A3, 11 x 17") for both sheet original and book original	
Copy (paper) size	Max.: A3 (297 x 420mm), 11 x 17" (279 x 432mm), Min.: A5 (148 x 210mm) (For Bypass Tray, Max.: 12 x 18" (304.8 x 457.2mm) Min.: Postcard (100 x 148mm) Image loss: Within 4mm for lead edge, Within 4mm for trail edge, Within 4mm for rear/front side	
Copy paper	Tray: 52 – 200g/m ² , Bypass Tray: 52 – 250g/m ² (standard), optional Bypass Tray: 52 – 280gsm	
First Copy Time (A4LEF)	3.0 sec	
Copy magnification	<Size-to-Size>: 1:1 ± 0.7% <Preset >: 1:0.500, 1:0.707, 1:0.816, 1:0.866, 1:1.154, 1:1.225, 1:1.414 <Variable>: 1:0.25 - 1:4.00 (in 1% increments)	
Continuous copying speed*1	B5LEF	79/68PPM
	A4LEF/B5LEF/A5	75/65PPM
	A4/B5	55/47PPM
	B4	44/39PPM
	A3	37/33PPM
Paper feed method/capacity*2	4,450 sheets 500 x 2 Tray + 1,490 + 1,860 + Bypass 100 sheets. 8,600 sheets with Bypass Tray & HCF (2 tray) trays.	
Number of continuous copy *3	9,999 sheets	
Power supply	AC220 – 240 ± 10%/110V ± 10%, 10/15A for both 50/60Hz ± 3%	
Max. power consumption	1.7kVA (@220VAC), 1.8kVA (@230VAC), 1.9kVA (@240VAC), 1.65kVA (@110VAC), In Sleep Mode: (DocuCentre) 2.3W (@230V AC), 6.65kWh*4 / (ApeosPort) 6.4W (@230V AC), 7.96kWh*4, In Low Power Mode: 158W@230V AC *Low Power Mode is not factory setting.	
Machine size	W 620 x D 779 x H 1,152 mm	
Machine weight	187kg	
Machine space	W 1,491 x D 779 mm (With Bypass Tray fully extended)	

*1 Speed may drop to adjust for image quality. Depending on the paper type and tray, productivity may drop.

*2 When using 80gsm paper.

*3 There are cases where the machine operation may temporarily suspend due to stabilisation processing of the image quality.

*4 TEC (Typical Energy Consumption).

PRINT (Optional)		
Printer Type	Built-in Type	
Continuous Print Speed	Same as the machine speed	
Output Resolution	Standard: 600 x 600 dpi (23.6 x 23.6 dots/mm) High Resolution: 1,200 x 1,200 dpi (47.2 x 47.2 dots/mm)	
PDL	Standard	PCL6, PCL5e
	Optional	Adobe® PostScript® 3™*1
Compliant Protocol	Standard (Ethernet)	TCP/IP (SMB, LPD, Port9100, IPP), NetBEUI (SMB), IPX/SPX (NetWare), EtherTalk (optional), Bonjour (optional) • EtherTalk is supported by Mac OS 7.5.3 - 9.2.2, and Mac OS X 10.1.5/10.2.x/10.3.9 - 10.4.6 • Bonjour is supported by Mac OS X 10.2.x or later
Compliant OS*2	Standard	Microsoft® Windows® 2000, Microsoft® Windows® XP, Microsoft® Windows Server® 2003, Microsoft® Windows Vista™
	Adobe® PostScript® 3™ Kit (optional)	Microsoft® Windows® 2000, Microsoft® Windows® XP, Microsoft® Windows Server® 2003, Microsoft® Windows Vista™, Mac OS 8.6 - Mac OS 9.2.2 English, Mac OS X 10.3.9 - 10.4.9 English
Fonts	Standard	PCL6/5: 82 European fonts, 35 Symbol sets
	Adobe® PostScript® 3™ Kit (optional)	136 Roman fonts
Emulation	ESC/P (VP-1000), HP-GL (HP7586B), HP-GL2/RTL (HP DesignJet 750C Plus), PCL5/PCL6 (HP LaserJet 4200), ESC/P/ESC/P-K*, KSSM*2, KS5843*2, KS5895*2 *1 Only for Traditional Chinese and Simplified Chinese models *2 Only for Korean model	
CPU	PowerPC e300 667MHz	
Memory	ApeosPort: 512 MB (Max.: 768 MB), DocuCentre: 256 MB (Max.: 768 MB)	
Interface	Standard	Ethernet 100BASE-TX/10BASE-T
	Optional	USB2.0

*1 When Adobe® PostScript® 3™ Kit is installed.

*2 For the latest information on compliant OS, visit our Customer Support Center.

SPECIFICATIONS

SCAN (Optional)		
Type	Mono scanner	
Scanning size	Max.: 297 x 420mm (A3)	
Scanning resolution	600 x 600dpi, 400 x 400dpi, 300 x 300dpi, 200 x 200dpi (23.6 x 23.6dot/mm, 15.7 x 15.7dot/mm, 11.8 x 11.8dot/mm, 7.9 x 7.9dot/mm)	
Scanning tone	1bit for each RGB (Input: 8bit)	
Original scanning speed*1	Monochrome: 75 ipm	
Interface	Ethernet 100BASE-TX/10BASE-T	
Save to Mailbox	Protocol	TCP/IP (Salutation, HTTP)
	Output Format	Monochrome Binary: TIFF, DocuWorks *2, PDF*2
	Driver	TWAIN
	Supported OS	Microsoft® Windows® 2000, Microsoft® Windows® XP, Microsoft® Windows Server® 2003, Microsoft® Windows Vista™
Scan to PC	Protocol	TCP/IP (SMB, FTP)
	Supported OS*3	SMB: Microsoft® Windows® 2000, Microsoft® Windows® XP, Microsoft® Windows Server® 2003, Microsoft® Windows Vista™, Mac OS X 10.3.9/10.4.x FTP: Microsoft® Windows® 2000, Microsoft® Windows® XP, Microsoft® Windows Server® 2003, Microsoft® Windows Vista™, Mac OS X 10.3.9/10.4.2/10.4.4 English, NetWare® 5.11/5.12
	Output Format	Monochrome Binary: TIFF (Compression method: MH, MMR), DocuWorks document, PDF
Scan to Mail	Protocol	TCP/IP (SMTP)
	Output Format	Monochrome Binary: TIFF (Compression method: MH, MMR), DocuWorks document, PDF

*1 Scanning speed differs depending on originals and resolution.

*2 When extracting by CentreWare Internet Services.

*3 For the latest information on compliant OS, visit our Customer Support Center.

FAX (Optional)		
Send Document Size	Max.: A3, 11 x 17", Long documents can be used (Max. Length: 600 mm)	
Recording Paper Size	Max.: A3, 11 x 17", Min.: A5	
Transmission Speed*1	2 second or more but below 3 second*2	
Transmission Mode	UNIQUE G3, ITU-T G3	
Transmission Resolution	Standard	8 x 3.85 lines/mm, 200 x 100 dpi
	Fine	8 x 7.7 lines/mm, 200 x 200 dpi
	Super Fine	16 x 15.4 lines/mm
	Super Fine (400 dpi)	400 x 400dpi
	Super Fine (600 dpi)	600 x 600dpi
Coding Method	MH, MR, MMR, JBIG	
Modem Speed	G3: 33.6/31.2/28.8/26.4/24.0/21.6/19.2/16.8/14.4/12.0/9.6/7.2/4.8/2.4kbps	
Applicable Lines	PSTN (Subscribed telephone line), PBX, Maximum 3 lines*3	

*1 Transmission speed for sending only image information; does not include communication control time. Note that actual communication times will vary according to the content of the original, the other party's device and conditions of the communication line.

*2 Standard image quality (8 x 3.85 lines/mm) for originals of A4 size with approximately 7 characters; At high-speed mode (Min. 28.8 kbps; JBIG) transmission.

*3 The optional Fax Kit (1 line), additional G3 Port Kit (2 lines) and Fax extension board kit are necessary.

DIRECT FAX (Optional)		
Send Document Size	A3, B4, A4	
Modem Speed	G3: 33.6/31.2/28.8/26.4/24.0/21.6/19.2/16.8/14.4/12.0/9.6/7.2/4.8/2.4kbps	
Transmission Resolution	Standard	200 x 100dpi (7.9 x 3.9 dots/mm)
	Fine	200 x 200dpi (7.9 x 7.9 dots/mm)
	Super Fine	400 x 400dpi (15.7 x 15.7 dots/mm), 600 x 600dpi (23.6 x 23.6 dots/mm)
Applicable Lines	PSTN (Subscribed telephone line), PBX, (Max.G3-3 ports)	
Compliant OS*1	Microsoft® Windows® 2000*, Microsoft® Windows® XP*, Microsoft® Windows Server® 2003*, Microsoft® Windows Vista™* *Also supported by the PostScript driver.	

*1 For the latest information on compliant OS, visit our Customer Support Center.

INTERNET FAX (Optional)		
Send Document Size	A3, B4, A4	
Transmission Resolution	Standard	8 x 3.85 lines/mm, 200 x 100 dpi (7.9 x 3.9 dots/mm)
	Fine	8 x 7.7 lines/mm, 200 x 200 dpi (7.9 x 7.9 dots/mm)
	Super Fine	16 x 15.4 lines/mm
	Super Fine (400 dpi)	400 x 400dpi (15.7 x 15.7 dots/mm)
	Super Fine (600 dpi)	600 x 600dpi (23.6 x 23.6 dots/mm)
File Format	Format: TIFF-FX, Compression Method: MH, MMR, JBIG	
Profile	TIFF-S, TIFF-F, TIFF-J	
Compliant Protocol	Send: SMTP, Receive: SMTP, POP3	

HIGH CAPACITY DADF		
Type of original feeder	Automatic duplex document feeder	
Original size/type	Max: A3, Min.: A5/38 – 157g/m ² Duplex in Mono: 50 – 157g/m ²	
Original feeding capacity*	150 sheets	
Original exchange speed (A4 LEF Simplex)	Mono: 75ipm	

* When using 80gsm paper.

HIGH CAPACITY FEEDER TRAY (1 Tray) (Optional)		
Paper Size	A4LEF, B5LEF, 8.5 x 11"	
Paper Weight	52 to 200g/m ²	
Capacity*1	2,000 sheets	
Dimensions	W 389 x D 610 x H 377mm	
Weight *2	29kg	
Space require when connect to main body*3	W 1,491 x D 779 mm	

*1 When using 80gsm paper.

*2 Paper is not included in the weight.

*3 HCF (A4 1Tray) + Main body + Exit Tray + By-pass Tray fully extended.

HIGH CAPACITY FEEDER TRAY (2 Tray) (Optional)		
Paper Size	(305.0 x 210.0 mm)*1, A4LEF, B5LEF, 8.5 x 11", 7.25 x 10.5" *2	
Paper Weight	52 to 200g/m ²	
Capacity *3	2,000 sheets x 2	
Dimensions	W 600 x D 694 x H 990mm	
Weight *4	72kg	
Space require when connect to main body*5	W 1,829 x D 779 mm	

*1 It is necessary for the CE to change the paper guide position.

*2 It is necessary for the CE to change the paper guide position and set the machine.

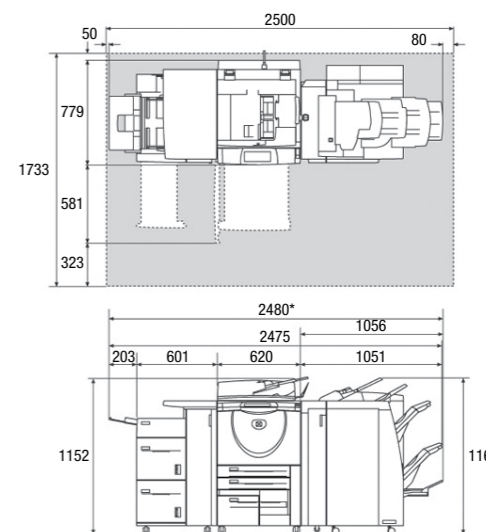
*3 When using 80gsm paper.

*4 Paper is not included in the weight.

*5 HCF (A4 2Tray) + Main body + Exit Tray + By-pass Tray fully extended.

INSTALLATION SPACE

- Main Body + HCF (2 Tray) (Optional) + Booklet Finisher D2 (Optional)



*When D2 Folder Unit is installed: W = 200mm