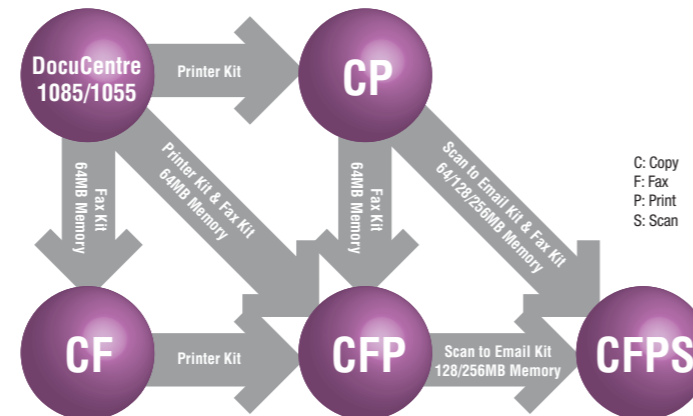


## SPECIFICATIONS

Item	DocuCentre 1055	DocuCentre 1085
<b>COPY</b>		
Copier Type	Desktop Type	
Copy Speed	15cpm (A4LEF)	18cpm (A4 LEF)
Memory	Standard RAM: 32MB Expandable to 96MB (32MB+optional 64MB Memory, shared with FAX), HDD NOT available	
Scanning System	Flat-bed scanning method by CCD image sensor (Fix Method)	
Resolution	IIT: 600 x 600 dpi, IOT: 600 x 600 dpi	
Maximum Original Paper Size	Books: Max 297 x 431.8 mm (A3, 11 x 17") Sheets: Max 307 x 1,000 mm (with the document feeder)	
Copy Paper Size	Max: A3 (297x420mm), 11x17" (279x432mm) Min: A5 (148x210mm) Image Loss: Lead Edge within 4mm, Trail Edge within 4mm, Right & Left Edge within 4mm	
Paper Weight	Tray 1: 60gsm to 90gsm Tray 2 to 4: 60gsm to 216gsm MSI: 60gsm to 216gsm	
Warm-up Time	From Power ON: Less than 25 seconds From Sleep Mode: Less than 25 seconds (Environment) Temperature: 20 deg C, Humidity: 55%, Voltage: 110V/220V	
FCOT	7.4 seconds or less (At: A4LEF, Tray 1, from platen, MC power ON, Engine motor OFF, Fuser ON, ROS ON, Over 3sec and within 10 sec from the time user places the original)	
Copy Magnification	<100%> 1:1±0.8% <Preset> 1:0.70, 1:0.86, 1:1.15, 1:1.22, 1:1.41 <Variable> 1:0.5 to 1:2.00 (1% increments)	
Paper Source	Standard Tray 1: 250 sheets (80gsm) + MSI 95 sheets (80gsm) Optional: 1Tray Module: 500 sheets (80gsm) 2Tray Module: 500 sheets (80gsm) x 2trays Maximum paper feed capacity: 1,845 sheets (standard + 1Tray Module + 2Tray Module) Important: When using Xerox P paper	
Maximum Quantity Selector	99 sheets	
Output Tray Capacity	250 sheets Important: When using Xerox P paper	
Power Source	Power source: 15A (100V), 12A (120V), 8A (220-240V)	
Power Consumption	<Max power Consumption> 1,500VA (@110 V), 1,440VA (@120V), 1,760VA (@220V), 1,920VA (@240V) <Low Power Mode> 133W, 134W (with Fax feature installed), 136W (with Printer feature installed), 137W (with Fax/ Printer feature installed) <Sleep Mode> 5W, 5W (with Fax feature installed), 10W (with Printer feature installed), 10W (with Fax/ Printer feature installed)	
Dimensions	640mm(W) x 520(D) x 486mm(H) (IOT with MSI+ Platen Cover) 640mm(W) x 520(D) x 563mm(H) (IOT with MSI+ DADF or ADF)	
Weight (excluding paper and options)	39.7kg, 46.9kg (with DADF)	
<b>PRINT</b> *optional for DC configurations		
Type	Built-in	
CPU	Power PC 300MHz	
Printing Speed	15ppm (A4LEF)	18ppm (A4 LEF)
Memory	Standard: 64MB Expandable to 192MB (64+128MB) or 320MB (64+256MB) HDD NOT available	
Resolution	Max. 600 x 600dpi / binary	
Smoothing Function	Equivalent to 2,400 x 2,400 dpi	
PDL	Standard: PCL6	Option: Adobe PostScript Level 3
Emulation	ESC/P (VP-1000), HP-GL (HP7586B), HP-GL2/RTL (HP DesignJet 750C Plus), PCL6 (HP Color LaserJet 5500), ESC/P, ESC/PS, KSSM*, KS5843*, KS5895* *: Only for Traditional Chinese and Simplified Chinese models **: Only for Korean model	
Printer Driver Supporting OS	Environment	PCL6 Postscript
	Windows 95/98	NA NA
	Windows ME	NA NA
	Windows 2000	✓ ✓
	Windows XP	✓ ✓
	Windows Vista	✓ ✓
	Windows NT 4.0	NA NA
	Windows 2003 Server	✓ ✓
	Mac OS	- ✓
Connectivity	100Base-TX / 10Base-T, Parallel Port (IEEE1284), USB2.0	
Network Protocol	Parallel: Compatible, Nibble, ECP Ethernet: TCP/IP (SMB, Port9100, IPP), NetBEUI (SMB), NetWare (IPX/SPX) (Optional), EtherTalk (Optional)	
Fonts	PCL fonts: European 81 type faces PostScript fonts: European 136 type faces (Optional)	
CentreWare Internet Services (EWS)	Embedded	

<b>SCAN TO E-MAIL</b> *option, also require Fax Kit, Printer Kit, 128MB Print Memory and 64MB Fax Memory	
Type	Monochrome scanner
Maximum Scan Area	297mm x 432mm (A3, 11" x 17")
Resolution	200 x 200dpi (Binary), 400 x 400dpi (Binary), 600 x 600dpi (Binary)
Halftone	NA
Scanning Speed	49.8 sheets/minute (For ITU-T No.1 Chart A4 200/300dpi) * Important The scanning speed varies depending on documents.
Send as E-mail	Supported protocols: TCP/IP (SMTP) Output Format: TIFF (MH, MMR), PDF
<b>FAX</b> *optional for DC/CP configurations	
Transmission Speed	G3 modem: 33,600 / 31,200 / 28,800 / 26,400 / 21,600 / 19,200 / 16,800 / 14,400 / 12,000 / 9,600 / 7,200 / 4,800 / 2,400bps Less than 3 seconds (G3: 28.8kbps, JBIG*)
Compression System	MH, MR, MMR, JBIG
Sending Document Size	Max: A3, 11 x 17" Long Document (Max 1,000mm)
Recording Paper Size	Max: A3, 11 x 17" Min: A5
Communication Mode	ITU-TG3
Scanning Density	Standard: 8 x 3.85 lines/mm, Fine: 8 x 7.70 lines/mm, Superfine: 16 x 15.4 lines/mm
Applicable Lines	PSTN, PBX
Additional Line	Not Available
Memory	Standard: 96MB (32+64MB) For DC/CP configuration to add Fax, it requires Fax Kit and 64MB Fax Memory.
<b>DIRECT FAX</b> *optional for DC/CP configurations	
Transmission Speed	Same as the fax feature
Sending Document Size	A3, B4, A4
Recording Paper Size	Max: A3, 11 x 17" Min: A5
Resolution	Standard: 200 x 100 dpi (7.9 x 3.9 dots/mm), Fine: 200 x 200 dpi (7.9 x 7.9 dots/mm), Super-fine: 400 x 400 dpi (15.7 x 15.7 dots/mm)
Applicable Lines	Same as the fax feature
Supporting OS	Microsoft® Windows® 2000, Microsoft® Windows® XP, Microsoft® Windows Server® 2003, Microsoft® Windows Vista™
<b>AUTOMATIC DOCUMENT FEEDER</b> *optional	
Capacity	50 sheets (80gsm)
Feeding Speed	15 sheets/minute (A4 1-sided) 18 sheets/minute (A4 1-sided)
Size Detection	Max: A3 (297 x 420mm), 11 x 17" (279 x 432mm) Min: A5
Original Weights	<Single-sided> 38gsm to 128gsm, <Two-sided> 50gsm to 128gsm
Mix Size Handling	Available when selected on the user interface and the lead edges have the same dimensions
Machine Size	536mm(W) x 447mm(D) x 105mm(H)
Machine Weight	7.2Kg
<b>DUPLEX AUTOMATIC DOCUMENT FEEDER</b> *optional	
Capacity	50 sheets (80gsm), paper stock height must not exceed 10mm.
Feeding Speed	15 sheets/minute (A4 1-sided) 18 sheets/minute (A4 1-sided) 13 sheets/minute (A4 2-sided) 16 sheets/minute (A4 2-sided)
Size Detection	Max: A3 (297 x 420mm), 11 x 17" (279 x 432mm) Min: A5
Original Weights	<Single-sided> 38gsm to 128gsm, <Two-sided> 50gsm to 128gsm
Mix Size Handling	Available when selected on the user interface and the lead edges have the same dimensions
Machine Size	536mm(W) x 447mm(D) x 105mm(H)
Machine Weight	7.5Kg

### PRODUCT UPGRADE PATH



Simple  
**Compact**  
and  
**Powerful**



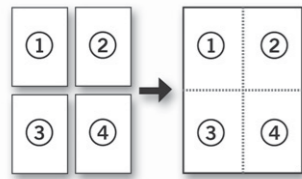
# an outstanding small multifunction device that grows with your business

The fully configured DocuCentre 1085/1055 is feature packed. With its outstanding, print, copy, facsimile and emailing capabilities, this A3 capable device is ideal for businesses requiring a cost effective all in one solution.

## Outstanding Print Solutions

With print speeds of 18ppm/15ppm and high print quality resolution of 600 x 600dpi, the DocuCentre 1085/1055 is well equipped to meet your business printing needs.

For added convenience, the machine is also capable of printing on a wide range of paper sizes (A5 to A3) and paper weights (60gsm – 216gsm).

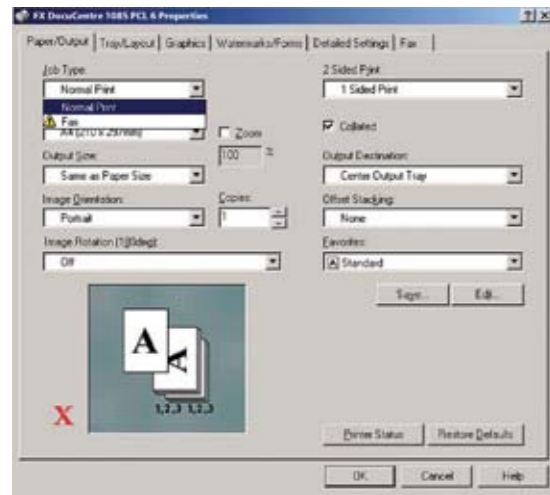


Additional features include:

- Trayless Duplexing\*1
- Watermark Printing
- N-Up Printing
- Automatic Paper Tray Switching

## Print Drivers

DocuCentre 1085/1055 is also equipped with an extremely intuitive PCL6 printer driver as standard.



## Outstanding Copy Solution

The DocuCentre 1085/1055 encapsulates a number of noteworthy copy features providing users with high quality professional looking documents at the touch of a button. These features include:

- Scan Once – Print Many
- Trayless Duplexing\*1, N-up Copying
- Image Quality Control
- Automatic & Mixed Media Identification

## Outstanding Scan to Email Solution

DocuCentre 1085/1055 optional scanner is capable of scanning documents at a rate of 49.8 sheet/min (A4LEF, 200dpi). With up to 600dpi scan resolution, users are ensured crisp clean image output.

## Scan to Email

This feature allows users to email scanned documents to any nominated address in TIFF or PDF format. It is ideal for saving costs associated with long distance faxing and converting hardcopy documents into electronic format\*2

## Outstanding Facsimile Solution

The DocuCentre 1085/1055 facsimile uses international standard G3 technology. Users can take advantage of its flexible features to save both time and money, making it the ideal communications tool.

## PC Faxing

DocuCentre 1085/1055 allows users to send faxes directly from any network connected PC. This saves costs by eliminating the need to print before faxing.

Additional features include:

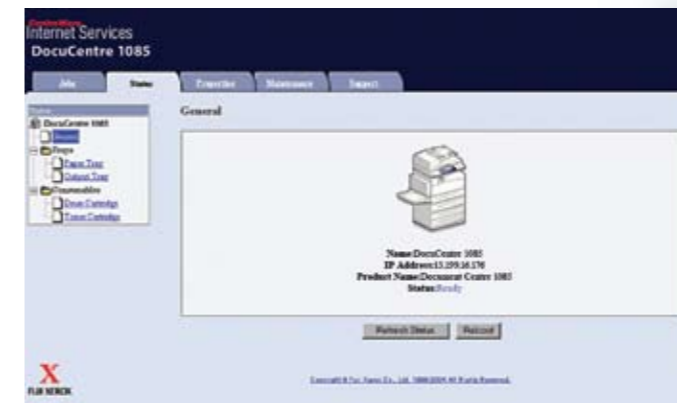
- Broadcast Faxing of A4 to A3 sized documents
- Trayless Duplex Faxing\*3 (Send)
- Speed Dials (Up to 200 numbers) & Group Dials (Up to 30 numbers)
- Faxing bound documents, books and objects off the glass

## Auditron

This valuable feature controls users' access to copy/print/fax/scan to email functions.

## CentreWare Internet Services / Embedded Web Server (EWS)

This feature allows administrators to configure the network settings, view status and manage & administer the device from a remote location. Administrators can also manage print job queues and track the status of consumables allowing them to support the office document processing needs more efficiently.



## Emulsion Aggregation (EA) Toner

In contrast with conventional toners, EA Toner is chemically grown to size, rather than ground, producing a more consistent size, which delivers higher quality print finishes. As an added benefit, EA Toner is also environmentally friendly.

## Built for Endurance

Designed to keep your business up and running, DocuCentre 1085/1055 features remote monitoring, which allows administrators to track the status of the machine and its consumables from their PC. This system also alerts administrators as CRU (Customer Replaceable Unit) nears its end of life, thereby allowing enough time to organise replacements so as to minimise downtime before it happens.



# DocuCentre 1085/1055



DocuCentre 1055



DocuCentre 1085



DocuCentre 1085 with ADF



DocuCentre 1085 with DADF, Duplex Kit, 1Tray & 2Tray



DocuCentre 1085 with ADF, 1Tray & Stand



Print



Copy



Fax



Email

## Flexibility and Modularity

DocuCentre 1085/1055 is a space saving modular system that provides the flexibility to protect your investment through its ability to expand its capabilities to suit your growing document needs. It can be configured as an independent copier or upgraded to a comprehensive system capable of printing, copying, faxing and emailing to meet the needs of every stage in the document creation and work processes of your business.

Depending on paper tray requirements, DocuCentre 1085/1055 can also be set up as a desktop device or on a separate stand for busier environments.

\*1 Only available when Duplex Kit is installed

\*2 Requires Printer Kit, Fax Kit, Scan to Email Kit, 128/256MB Print Memory and 64MB Fax Memory and can only be used when the device is connected to a mail server

\*3 Only available when optional Duplex Kit and optional DADF are installed