

DocuCentre-IV  
C2260



# DocuCentre-IV C2260

## Digital Colour Multifunction Device

True productivity meets truly affordable colour



# DocuCentre-IV C2260 Multifunction Device

Print. Copy. Scan. Fax. Open the door to a new level of office possibilities. Advanced scanning and faxing functions increase your office workflow options. And fast, low-cost black-and-white printing and copying give you the robust productivity you rely on every day. But why limit yourself to black-and-white? For those times you need high-impact, beautiful colour, the DocuCentre-IV C2260 delivers for a lot less than you might think.

## Features at a glance

- Print, copy, scan with optional faxing
- Print up to 20 ppm in black-and-white and colour
- Powerful scanning tools
- Intuitive, easy-to-use colour user interface
- Cost control and security features



Copy



Print



Scan



Email



Fax



Finishing



DocuCentre-IV C2260 with four standard paper trays and optional Finisher-B1

# Enjoy outstanding reliability and convenience

New advances in Fuji Xerox technology create an extremely reliable print engine, with additional design features focused on a great user experience.

**Smaller overall footprint.** Thoughtful engineering delivers more functionality while taking up less space. The compact new imaging system lets you add the integrated Finisher-A1 (stapler) without increasing the device footprint.

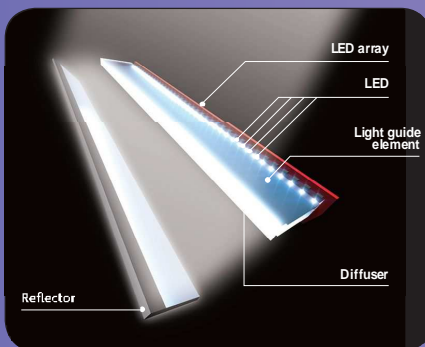
**Finishing flexibility.** Create professional presentations and attractive manuals or proposals with the choice of two finishing options to provide more print job flexibility.

**New design, colour user interface** is a 7-inch WVGA colour TFT screen that provides a high-precision display using colourful icons and larger buttons. The user-friendly layout allows users to complete a job hassle-free with smooth left to right control panel operation.

## Configuration Options

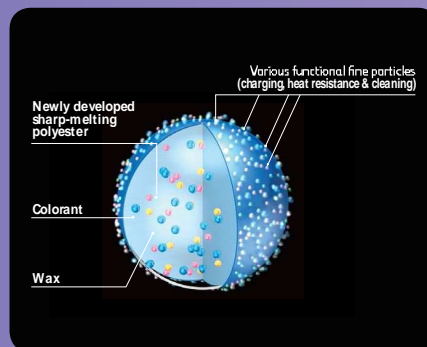


## Revolutionary environmental technologies



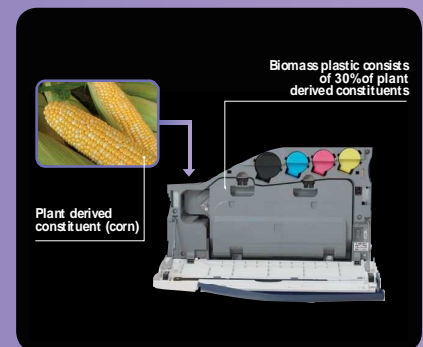
### High-Intensity White LED

For the first time, Fuji Xerox is using LED (light emitting diode) as the light source for image scanning. This enables brightness that is 1.5 times greater than xenon lamps used in conventional devices and reduces the power consumption by 70%, while achieving greater scanning precision and speed.



### EA-Eco toner

EA-Eco toner has been adopted in products for office use. Fusing temperature of the EA-Eco toner is more than 20°C lower than that of conventional toners, cutting power used by around 15%.



### Biomass plastic

The use of biomass plastic, comprising more than 30% of plant-derived constituent (corn), is used in specific device parts. The carbon footprint of producing the biomass plastic is 20% lower than conventional plastic (ABS resin).



# Powerful scanning solutions

Now it's easier to bring paper documents into the network, with the sophisticated scanning tools you'll find in the DocuCentre-IV C2260.

**Cutting-edge scanning functionality.** Increase efficiency with Scan to Email for quick document distribution to multiple email addresses, Scan to Folder to store on the device and Scan to Home to store on a personal directory. Plus Scan to Network Folder or FTP.

**Create searchable PDF files at the device** for easy archiving, organising, searching and sharing. Creating a text searchable PDF file is as easy as choosing a file format when programming a scan job – it can even be designated the default format<sup>1</sup>.

<sup>1</sup> Black-and-white documents only. Optional Searchable PDF Kit is required.

**Store frequently printed documents.** Increase employee efficiency with robust scanning features that store frequently used forms and documents in the device's hard drive for subsequent reprinting.

**Light directory access protocol (LDAP)** takes the time and effort out of scanning a document to email by providing users with search access to the email address of an intended recipient from the network's address book.

**Streamline network traffic and create greater operational efficiency** by sending information via a URL link. Send a URL link that brings you directly to a file's location rather than the document itself.

**Quickly scan files directly to a USB flash drive** through the USB port that is conveniently located on the front of the device<sup>2</sup>.

<sup>2</sup> Optional Scan to USB Kit is required.



# Fits your office, fits your budget

You get a performance-packed device plus attention-grabbing colour when you really need to make a good impression.

**Keeps up with your busy pace.** Output documents at a print speed of up to 20 ppm in colour and black-and-white.

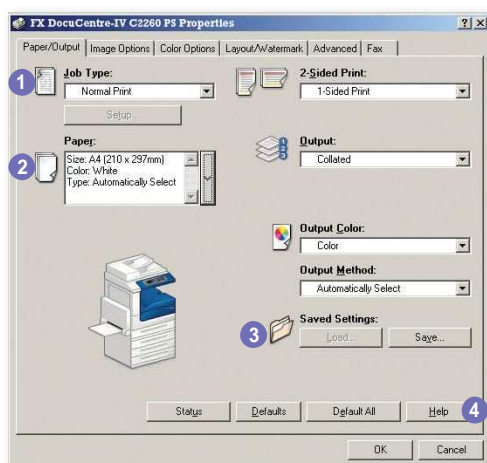
**To speed up copying and faxing** an express (simple) copy / fax feature is available that displays only the basic settings. This is provided in addition to the normal feature.

**USB direct printing** is possible with the optional USB Media Print Kit. It can save time for users by printing PDF, TIFF and JPEG files directly from a USB flash drive without having to boot up a PC. A perfect solution when the need to print is urgent.



**WHQL certified PCL (standard) and PostScript (optional)<sup>3</sup> print drivers** provide a consistent, easy-to-use interface for end-users that can greatly simplify your printing operations.

<sup>3</sup> WHQL certified drivers will be available early 2010.



- 1 Drop down menu for secure print, fax, save to mailbox and more
- 2 Paper selection summary window
- 3 Favourite print settings
- 4 Help function for feature descriptions and driver assistance

**Non-Post Script print driver** is now available which allows users to print documents from Mac OS X without adding the PostScript option.

**Save time by storing the settings** of frequently printed documents as favourites in your print driver. Settings include paper sizes, covers, duplexing, finishing and more.

**Electronic fax.** If there is a concern about faxes getting lost in piles of other documents, this feature eliminates paper wastage and provides peace of mind. It will route incoming faxes to a nominated email address, folder or network connected PC for retrieval and further distribution on demand.



**Restrict users from sending faxes** to numbers not listed in your address book. This security feature will help protect the leakage of confidential information and reduce costs by preventing users from using the fax function for non-business related purposes.

**Capture and store undelivered faxes sent directly from the device.** The fax number can be edited at the user interface and re-sent if required, without rescanning the document(s).

**Block unwanted (junk) fax numbers.** This allows you to block specified fax numbers, so it does not print faxes received from those numbers in the future.

**Incoming faxes reported by e-mail.** For paperless fax reception, fax reception can be reported to five pre-registered users when a document is stored in the mailbox.



# The control you need

The DocuCentre-IV C2260 puts you in control, with some of the most advanced output security features in the industry. And our advanced reporting and management tools help you keep costs down without sacrificing quality.



### Latest in Internet standards and protocols.

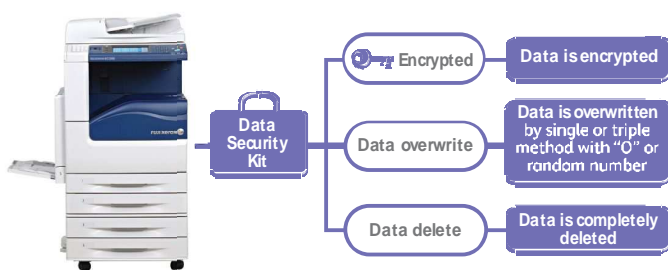
DocuCentre-IV C2260 multifunction device supports the IPv6 standard, which opens up additional IP addressing opportunities across the Internet and inside enterprise firewalls.

IPv6 provides additional network security, better network routing and configuration, and improved support for high volume printing and larger print jobs.

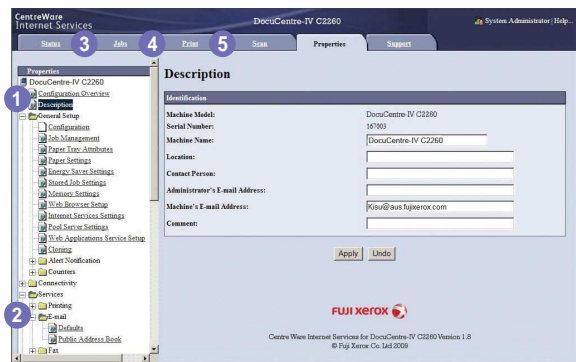
**State-of-the-art security standards.** The DocuCentre-IV C2260 conforms to the latest industry standards for network security, supporting IPSec to encrypt document content, SNMPv3 to securely transfer information to users and 802.1x to securely authenticate network devices before allowing document access.

**Secure Print** helps prevent unauthorised viewers from seeing documents by holding jobs in the print queue until the user is authenticated, eliminating paper wastage and securing confidential information.

**Data Security Kit** available as an option with this device provides administrators with three security options:



**Remote fleet configuration.** CentreWare Internet Services allows for simplified device configuration and administration, and lets you easily clone configurations to other similar devices on the network.



- 1 Configure auditron
- 2 Upload email / fax address books as CSV files
- 3 Monitor paper tray / consumables status
- 4 Monitor job queues
- 5 Submit driverless print jobs

**Manage colour printing to minimise costs.** Control costs by nominating when colour could be used and by whom. This ensures that colour is available to those individuals who truly leverage its power - such as the sales teams and marketing department.

**Manage and track device usage using Xerox Standard Accounting.** Device usage reports can be obtained and presented as a CSV file for greater cost control of printing, copying, scanning and faxing.

**Prevent losing your settings** after a fatal system failure with the Setting Restore Tool. This tool will backup the settings stored on your hard drive and easily restore these settings<sup>1</sup>.

<sup>1</sup> Settings can only be restored after changing the hard disk of the device.

# Fuji Xerox and environmental sustainability

Fuji Xerox technology and services are designed and managed to improve sustainability performance for its customers. Our equipment features environmentally responsible design and energy efficient enhancements.

Our document software and digital technologies help reduce paper wastage and our services enable clients to improve the efficiency of document intensive business processes and optimise their equipment infrastructure to save costs and cut carbon emissions.

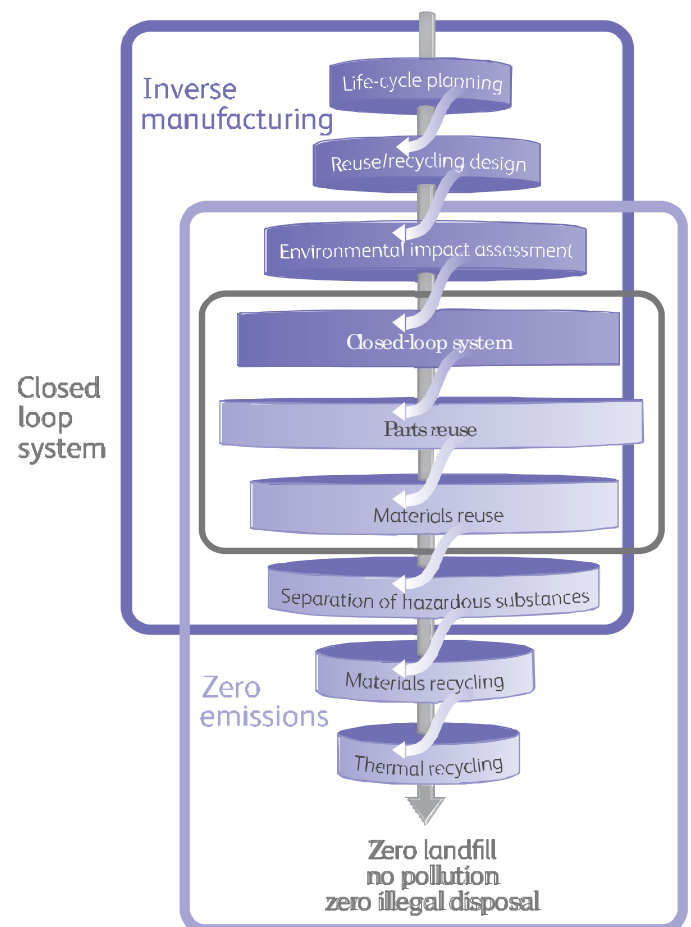
**Design for the environment.** Every piece of Fuji Xerox equipment is designed with the environment in mind and our achievements include:

- Eliminating the need to use hazardous material such as lead-based solder;
- Enabling low energy consumption during use of the machine;
- Utilising innovative and energy efficient toner;
- Minimising the use of new resources; and
- Facilitating the remanufacture or recycling of used machines and parts at end of life

**The Eco Solution.** Fuji Xerox has developed a microsite ([www.fxap.com.sg/green](http://www.fxap.com.sg/green)) to educate customers about using ecologically smart approaches that can help save costs, energy and the environment. By evaluating your current setup and identifying any areas of concern, Fuji Xerox can recommend an efficient workflow solution that will optimise output, IT devices and document management, and Print-On-Demand.



**A leader in product stewardship.** Fuji Xerox was first in the industry with products made from reused components and takes responsibility for all end-of-life products. We achieve over 99% resource recovery from the products returned to us at end of life.



## Specifications of DocuCentre-IV C2260 Series

### Copy Function

Type	Console Type
Memory	1 GB (Max. 2 GB)
HDD	Option: 80 GB or more (Usable Space: 40 GB)
Scanning Resolution	600 x 600 dpi
Warm-up Time	36 sec or less (at room temperature 20°C <sup>1</sup> )
Original Paper Size	Max. 297 x 432 mm (A3, 11 x 17") for both sheet original and book original
Output Paper Size	Max: A3, 11 x 17" (297 x 432 mm), Min: A5 For Bypass Tray: Postcard (100 x 148 mm), Envelope (120 x 235 mm)
Output Paper Weight	Tray: 60 - 256 gsm, Bypass Tray: 60 - 216 gsm
First Copy Output Time	BW (A4LEF) : 9.6 sec Colour (A4LEF) : 11.6 sec
Continuous Copy Speed	A4: 20 ppm <BW> 20 ppm <Colour> A3: 11 ppm <BW> 11 ppm <Colour>
Paper Tray Capacity	Standard: 2,045 sheets* 500 sheets x 4 Tray + Bypass 45 sheets Max: 2,045 sheets (same as standard)
Output Tray Capacity	Exit 1: 250 sheets (A4LEF), Exit 2: 250 sheets (A4LEF)
Power Supply	AC 220 - 240 ± 10% / 110 V ± 10%, 10/15 A for both 50 / 60 Hz ± 3%
Power Consumption	1.76 kVA (AC 220 ± 10%) / 1.92 kVA (AC 240 ± 10%) / 1.65 kVA (110 V ± 10%) Sleep Mode: 3 W (110 V) / 3.5 W (220 - 240 V), Low Power Mode: 90 W up to W585 x D640 x H1,132 mm <sup>1</sup>
Dimensions	up to W585 x D640 x H1,132 mm <sup>1</sup>
Machine weight	114 kg (excludes toner) <sup>1</sup>

<sup>1</sup> Standard for CE marking in EU

### Print Function

Type	Built-in Type
Print Resolution	600 x 600 dpi
PDL	Standard: PCL6, PCL5, Optional: Adobe® PostScript® 3™
Operating System	Standard: Windows® 2000, Windows® XP, Windows Server® 2003/2008, Windows Vista®, Windows® 7, Windows® XP x64, Windows Server® 2003/2008 x64, Windows Vista® x64, Windows® 7 x64, Windows Server® 2008 R2 x64, Mac OS X 10.5/10.6 Adobe® PostScript® 3™ (Optional): Windows® 2000, Windows® XP, Windows Server® 2003/2008, Windows Vista®, Windows® 7, Windows® XP x64, Windows Server® 2003/2008 x64, Windows Vista® x64, Windows® 7 x64, Windows Server® 2008 R2 x64, Mac OS X 10.5/10.6, Mac OS X 10.3.9-10.4.11 (except 10.4.7), Mac OS X 10.5/10.6
Connectivity	Hemet 100 BASE-TX / 10 BASE-T, USB 2.0

### Scan Function

Type	Colour Scanner
Scanning Speed	BW: 55 ipm, Colour: 55 ipm
Scanning Resolution	600 x 600 dpi, 400 x 400 dpi, 300 x 300 dpi, 200 x 200 dpi
Connectivity	Hemet 100 BASE-TX / 10 BASE-T
Scan Destinations	Scan to Email, Folder, PC / Server (using FTP / SMB protocol)

### Fax Function (Optional)

Send Document Size	Max. A3, 11 x 17", Long document (Max. 600 mm)
Recording Paper Size	Max: A3, 11 x 17", Min: A5
Transmission Time	Less than 3 seconds
No. of Fax Lines	HX, FSIN, Max. 3 ports (G3-3port)

Descriptions in this material, product specifications and / or appearances are subject to change without prior notice due to improvements. Please note that the product colour appears differently from the actual colour as a result of properties of papers or printing ink. Windows and Windows NT are registered trademarks of Microsoft Corporation. NetWare is a registered trademark of Novell, Inc. in the United States, Macintosh, Mac OS and EtherTalk are trademarks of Apple Computer, Inc. PostScript is a registered trademark of Adobe Systems Incorporated in each country. HP-GL is a registered trademark of Hewlett-Packard Company. Other company names or product names are registered trademarks or trademarks of each company.

Spare for the standard configuration of installed machines is supported for up to 7 years from the date of the end of machine production.

### Duplex Automatic Document Feeder

Capacity	110 sheets
Original Paper Size	Max: A3, 11 x 17", Min: A5, 38 - 128 gsm, In Duplex: 50 - 128 gsm
Output Paper Weight	38 - 128 gsm, In Duplex: 50 - 128 gsm
Feeding Speed (A4LEF)	20 ppm <BW> 20 ppm <Colour>

### Finisher A1 (Optional)

Paper Size / Paper Weight	Max: A3, 11 x 17", Min: Postcards (100 x 148 mm), 60 - 220 gsm
Stacker Capacity	[Without Staples] A4: 500 sheets, B4: 250 sheets, A3 or larger: 200 sheets, Mixed Size Stacking: 250 sheets, [With Staples] 30 sets
Staple	
Capacity	A4: 50 sheets (Max. 90 gsm), B4 or larger: 30 sheets (Max. 90 gsm)
Paper Size	Max: A3, 11 x 17", Min: B5LEF
Position	Single (Front / Angled Staple)

### Finisher B1 (Optional)

Paper Size / Paper Weight	Max: A3, 11 x 17", Min: B5, 60 - 220 gsm
Stacker Capacity	[Without Staple] A4: 2000 sheets, B4: 1,000 sheets, Mixed Size Stacking: 300 sheets [With Staples] A4: 100 sets or 1,000 sheets, B4 or larger: 75 sets or 750 sheets Booklet / Fold: 50 sets or 600 sheets, Fold: 500 sheets
Staple	
Capacity	50 sheets (Max. 90 gsm)
Paper Size	Max: A3, 11 x 17", Min: B5
Position	Single (Front / Angled, Back / Straight), Dual (Parallel)
Punch <sup>2</sup>	
Paper Size	A3, 11 x 17", B4, A4, A4LEF, Letter (8.5 x 11"), Letter (8.5 x 11") IFF, B5LEF
Number of Holes	2 Holes / 4 Holes, or US2 or 3 Holes
Paper Weight	60 - 200 gsm
Booklet Finishing <sup>3</sup>	
Capacity	Booklet: 15 sheets, Fold: 5 sheets
Paper Size	Max: A3, 11 x 17", Min: A4, Letter (8.5 x 11")
Paper Weight	Saddle-Stapling: 64 - 80 gsm, Half-Folding: 64 - 105 gsm

<sup>2</sup> Optional Finisher B1 Punch unit is required

<sup>3</sup> Optional Finisher B1 Booklet unit is required

### Customer Expectation Document (CED)

For detailed product specifications, optimum performance parameters and service clearances refer to the Customer Expectation Document.



Reproduction Prohibitions Please note that reproduction of the following is prohibited by law:

Domestic and overseas banknotes and coins, government-issued securities, national bonds and local bond certificates, Unused postage stamps and post cards. Certificate stamps stipulated by law. The reproduction of works for copyright purposes (literary works, musical works, paintings, engravings, maps, cinema to graphic works, photographic works, etc.) is prohibited except when they are reproduced personally, at home or within limited range according to the above. This product is equipped with an anti-counterfeit feature. This feature is not intended to prevent illegal reproduction. Be extremely careful about the management of equipment used.



#### For Your Safe Use

Before using the product, read the Instruction Manual carefully for proper use.

Use the product with an appropriate adequate power source and voltage displayed. Be sure to establish a ground. In the case of a failure or short circuit, an electric shock may result.

For more information or detailed product specifications, call or visit us at

Fuji Xerox Asia Pacific Pte., Ltd

Indo-China Operations

81 - 85 Ham Nghi, Dist 1, Ho Chi Minh City

Tel: (84-8) 38290038 Fax: (84-8) 38290032

http://www.fujixerox.com.vn

